

# EDUCATIONAL SPACE & PROGRAM IMPROVEMENTS – WINCHESTER ELEMENTARY SCHOOL



## HEALTH/ SAFETY/WELFARE, SECURITY & ACCESSIBILITY:

- Upgrade interior door hardware
- Add permanent vestibule at back door parking lot

## FACILITIES INFRASTRUCTURE:

- New roof/restoration
- Masonry restoration and repointing
- New exterior doors
- Replace gymnasium windows

## BUILDING UTILITIES:

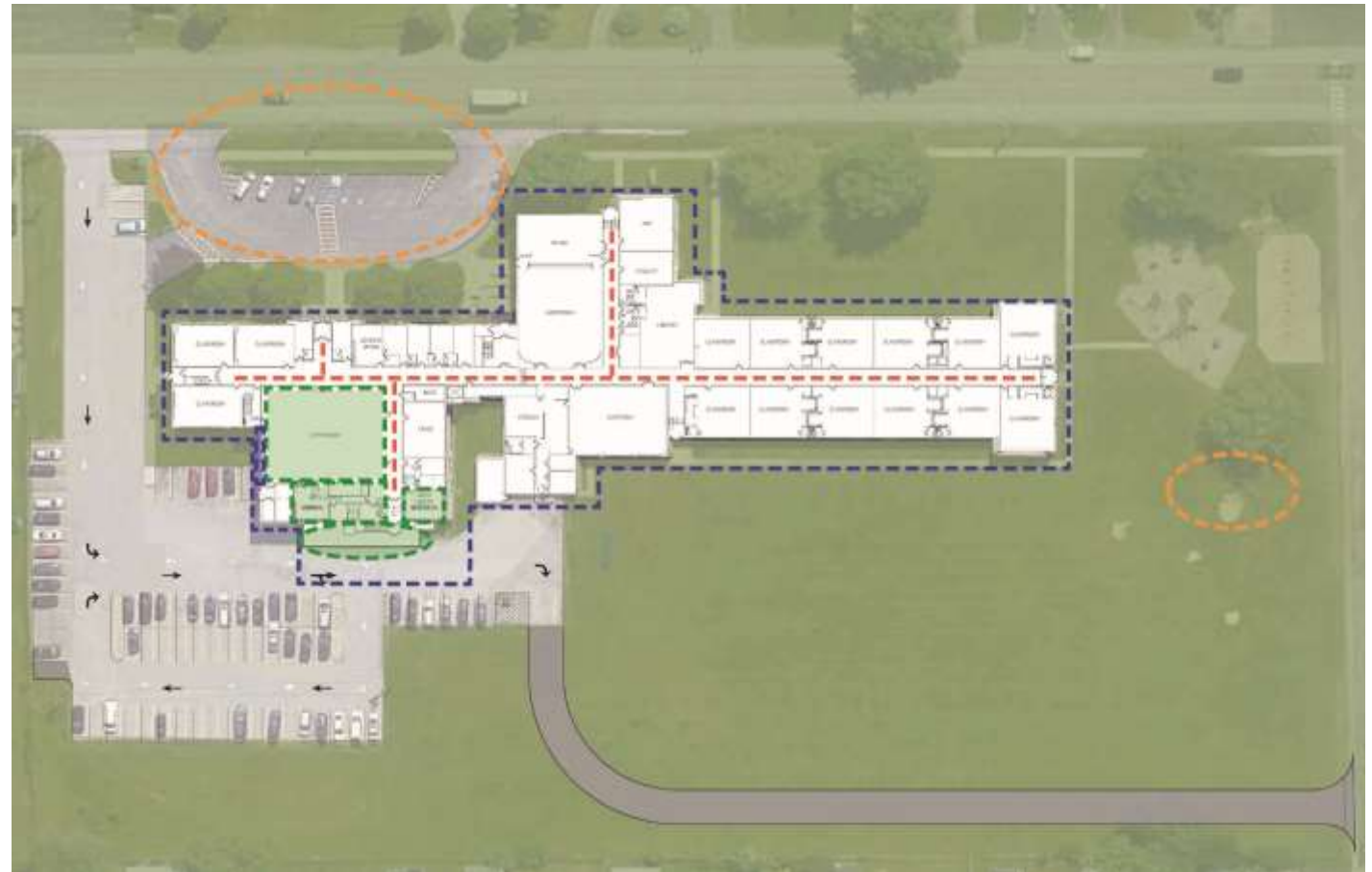
- Update cabling, clock systems and P.A.
- Upgrade air handling ventilation system
- New exterior LED light fixtures
- New drinking fountains

## EDUCATIONAL SPACE & PROGRAM IMPROVEMENTS:

- Replace gym wall pads
- Replace folding partition with roll-down curtain
- Split boys locker room into girls/boys with 2 offices

## SITE IMPROVEMENTS:

- Replace damaged sidewalks & curbs
- Replace asphalt paving
- Resurface existing bus loop
- Replace existing backstop
- New one way access road for parent drop-off



# EDUCATIONAL SPACE & PROGRAM IMPROVEMENTS – WINCHESTER ELEMENTARY SCHOOL



Replace Gym Wall  
Pads & Remove  
Folding Partition



New Exterior Doors

Permanent Vestibule  
At Back Door  
Parking Lot



New Roof/  
Restoration