

# EDUCATIONAL SPACE & PROGRAM IMPROVEMENTS – EAST MIDDLE SCHOOL



## HEALTH/ SAFETY/ WELFARE, SECURITY & ACCESSIBILITY:

- Remove window infills and replace with glass
- Update hardware on interior doors
- Repairs and upgrades to existing terrazzo stairs
- Enlarge health office

## FACILITIES INFRASTRUCTURE:

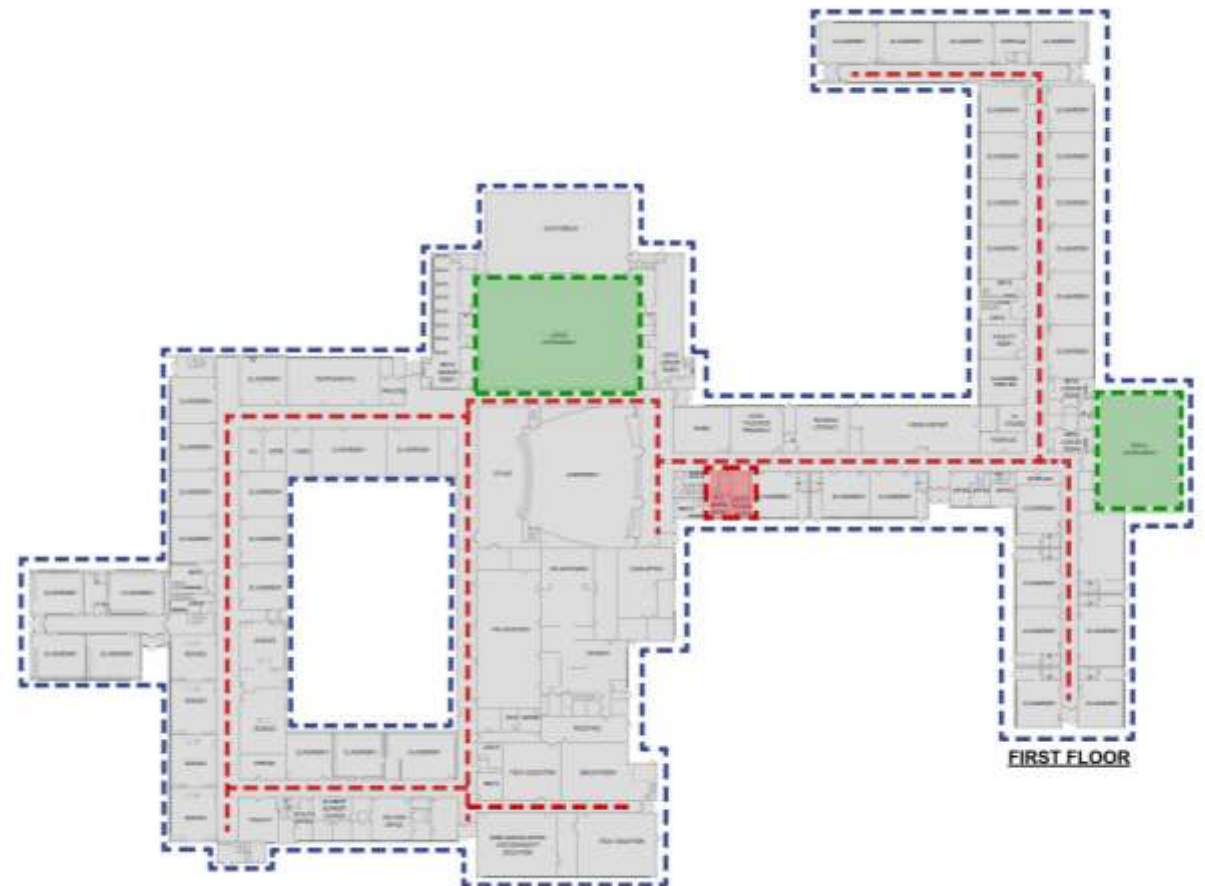
- New roof/restoration
- Masonry restoration
- New exterior doors

## BUILDING UTILITIES:

- Replace building mounted lighting with LED light fixtures
- Cabling, CER & P.A.
- Air handling and ventilation updates
- New drinking fountains

## EDUCATIONAL SPACE & PROGRAM IMPROVEMENTS:

- Replace gymnasium wall pads
- Replace folding partition with roll-down curtain
- Replace/restore damaged floor
- Repair ceilings
- New power bleachers in main gym



# EDUCATIONAL SPACE & PROGRAM IMPROVEMENTS – EAST MIDDLE SCHOOL



Replace Wall Pads/  
Remove Folding  
Partition/ Replace  
Damaged Floor/  
Repair Ceiling



Masonry Restoration

Enlarge Nurse's  
Office



New Roof/  
Restoration

# EDUCATIONAL SPACE & PROGRAM IMPROVEMENTS – EAST MIDDLE SCHOOL SITE



## SITE IMPROVEMENTS:

- Replace damaged sidewalks & curbs
- Replace asphalt connecting drive
- Add visitor parking spaces to existing bus loop

