



Memorandum

TO: All Visiting Schools and Officials
FROM: Patrick Cauley
DATE: March 31, 2021
SUBJECT: Building Entrance Procedures

Please see the following procedures for entering our Hamburg High School and Middle School buildings for athletic contests:

Hamburg High School

- When entering the lot from Legion Dr, park on the road alongside the softball field
- Enter in door #28 (marked in the alcove) directly across from the softball field

Hamburg Middle School

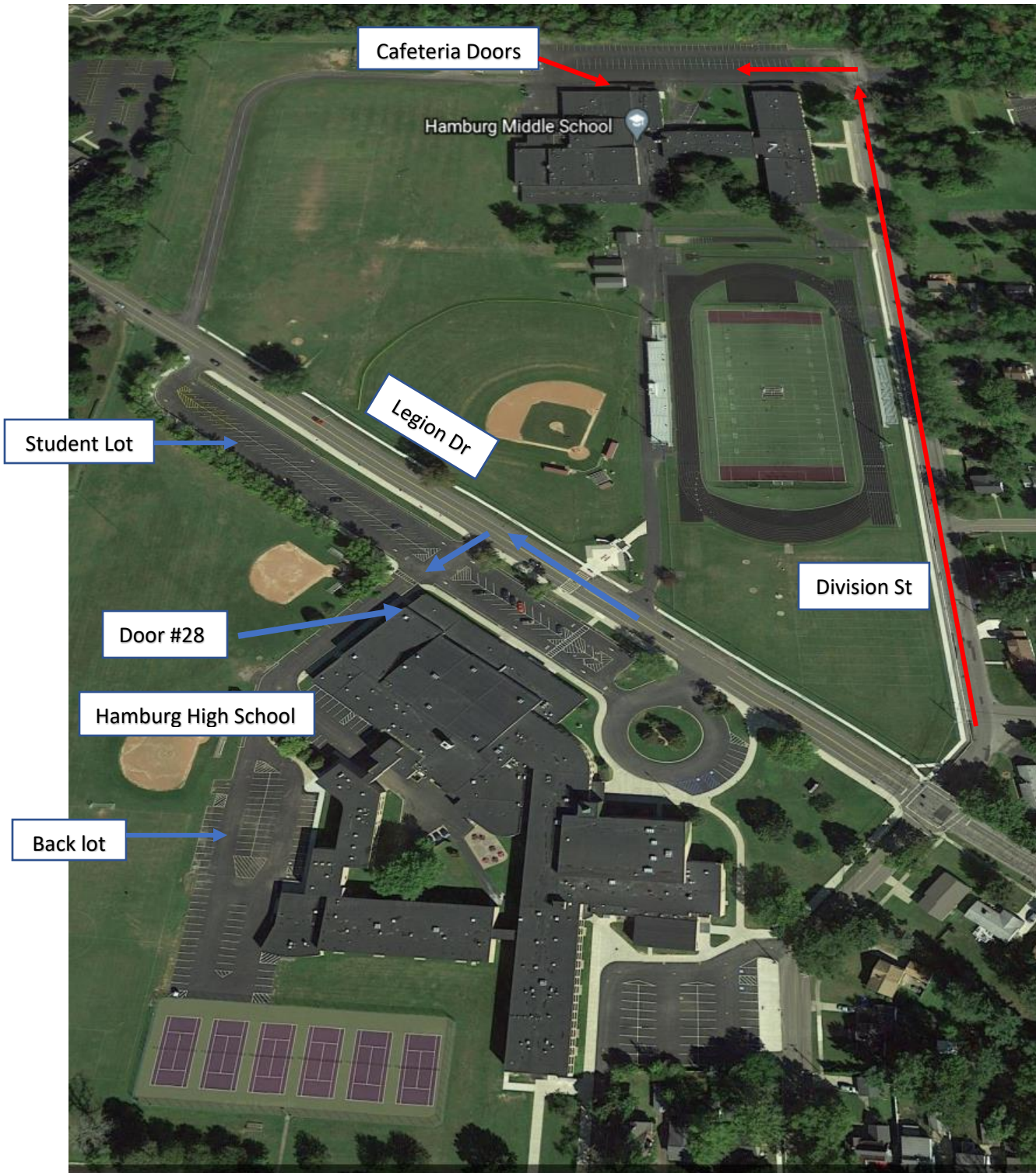
- Enter lot from Division St
- Park near and enter in the cafeteria doors
- They are the biggest set of doors in the parking lot

For Officials:

- Once you've arrived in the lot, please call Patrick Sparks (athletic trainer 716-425-6092) to meet you for a temperature check.

Please see the attached map for reference.

Fall 2 Athletics – Hamburg High School and Middle School



For FALL 2 Athletics

Please enter door #28 at the High School and enter the Cafeteria doors at the Middle School. At the High School, you may park in the back lot or the student lot.