

# EDUCATIONAL SPACE & PROGRAM IMPROVEMENTS – WEST MIDDLE SCHOOL



## HEALTH/ SAFETY/WELFARE, SECURITY & ACCESSIBILITY:

- Renovate entry to create secure entrance
- Update hardware on interior doors

## FACILITIES INFRASTRUCTURE:

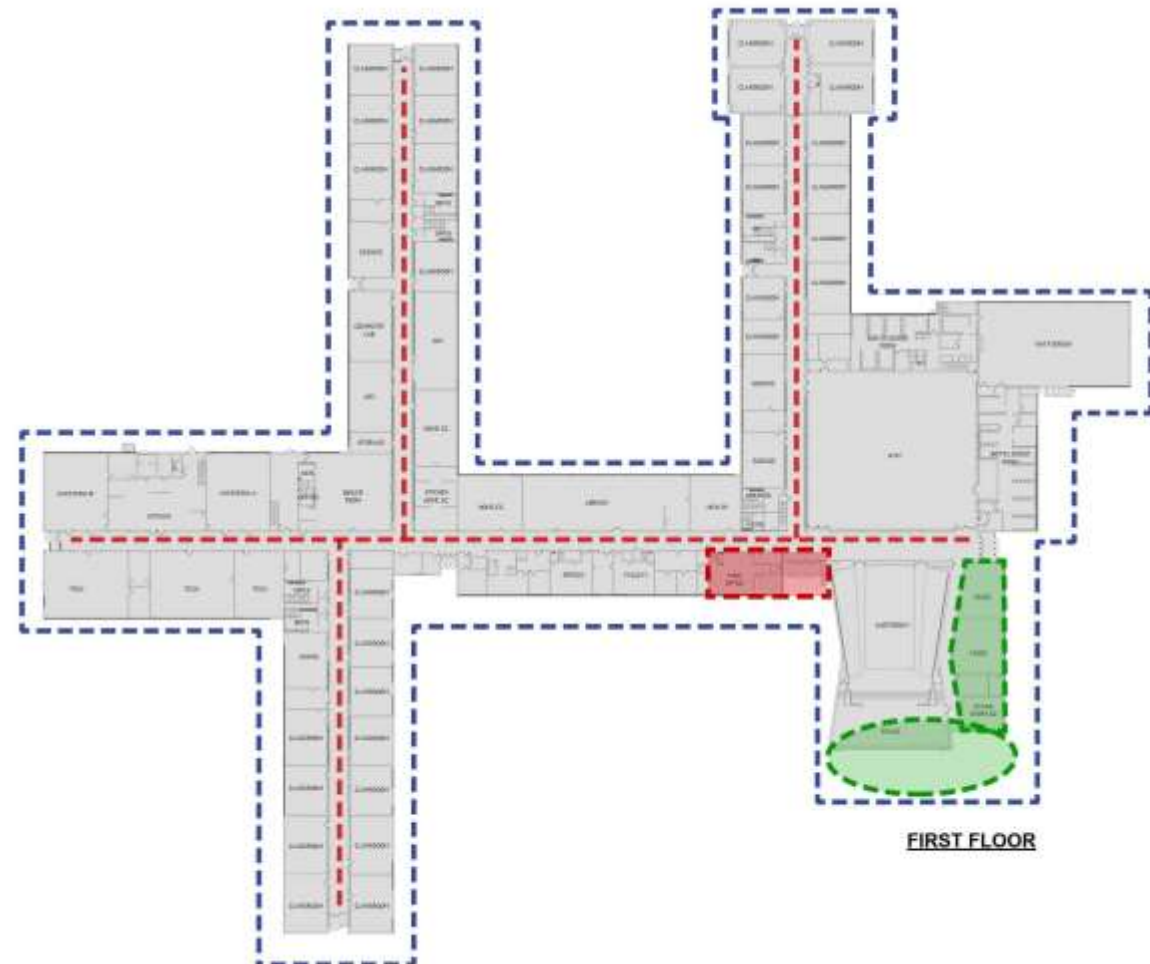
- New roof/restoration
- Masonry restoration
- New exterior doors
- New gym window hardware

## BUILDING UTILITIES:

- Replace building mounted lighting with LED light fixtures
- Removal and replacement of panel boards
- Cabling, CER & P.A.
- Air handling and ventilation updates
- New drinking fountains

## EDUCATIONAL SPACE & PROGRAM IMPROVEMENTS:

- Renovate music classrooms
- Addition for classroom and band room



# EDUCATIONAL SPACE & PROGRAM IMPROVEMENTS – WEST MIDDLE SCHOOL



Renovate Music  
Classrooms/ Addition  
For Classroom And  
Band Room



New Exterior Doors



Renovate Entry To  
Create Secure  
Entrance



New Roof/  
Restoration



# EDUCATIONAL SPACE & PROGRAM IMPROVEMENTS – WEST MIDDLE SCHOOL SITE



## SITE IMPROVEMENTS:

- Replace damaged sidewalks & curbs
- Replace asphalt paving
- New parent drop-off
- New bus loop with visitor parking spaces

## EDUCATIONAL SPACE & PROGRAM IMPROVEMENTS:

- Addition for music department

